



SADIE SINK



ZOË KRAVITZ



ALLISON WILLIAMS



@ninapark

THE FINE ARTIST

Nina Park

Park's painterly approach to makeup is a favorite among the red carpet's brightest stars. By Erin Reimel

HOMETOWN: Chicago

CURRENT LOCATION: New York City

BIG BREAK: I don't know if I've had a big break, but I often feel like, "Wow, I can't believe I'm actually here and experiencing this." Last year was my first worldwide press tour, with Laura Harrier for *BlacKkKlansman*. It was like a reality show challenge, with four looks a day.

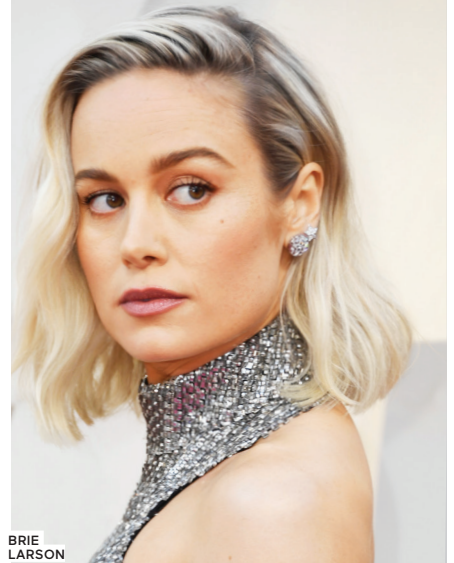
BEST BEAUTY HACK: I like to use Schwarzkopf Göt2b Ultra Glued Invincible Styling Gel (\$5) on eyebrows, especially for longer, coarser brows. I think brow gels leave a lot of residue and feel clumpy, but hair gel gives you a sleek look. I just put the tiniest amount on a spoolie and brush it through the brows, and then I fill them in with pencil afterward.

BEST ADVICE YOU'VE RECEIVED: My friend and mentor Pati Dubroff, who's also a makeup artist, told me to always go day by day and to not overthink things. That's helped me, because I can get overwhelmed and anxious. Other than that...don't overpluck your eyebrows.

WHAT INSPIRES YOU: I've always been inspired by oil paintings—the different tones or subtle things that you see but that aren't aggressively thrown at you. I love to bring out someone's brows or cheekbones or the shape of the eye. It depends on the person, but I think it's finding little details that really speak to me.



LUCY BOYNTON



BRIE LARSON



LAURA HARRIER

FROM LEFT, PARK'S HERO PRODUCTS: CHANEL SOLEIL TAN DE CHANEL (\$48); CHANTECAILLE LIP CHIC IN PATIENCE (\$38); HOURGLASS CAUTION EXTREME LASH MASCARA (\$29).

