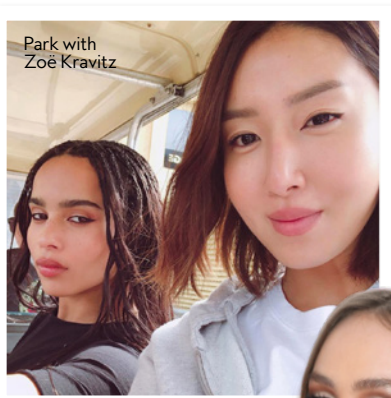


NINA PARK ON The Art of Subtlety



“I’m not the artist who’s going to do bright green eye shadow or completely change your face.”

ON A RARE DAY OFF just after the annual Met Gala, makeup pro Nina Park is in her New York City apartment refusing to lift a single lipstick. “I just want to sit in silence, watch terrible TV, and eat all the delivery food I can,” she says. The cool, monochromatic gala looks she created for Lily-Rose Depp (pictured near right) and Zoë Kravitz earned raves—and such accolades are hardly accidental. Park is super-prepared for every job, often sketching face charts on her iPad before meeting with clients. “That’s one of my favorite things to do,” she says. “I prep all the time. It’s a sickness. But I do think my clients appreciate that.”

Park sketched her way from her hometown of Barrington, Ill., to art school in Minneapolis. But she left shy of graduating and got an aesthetician’s license in Illinois before persuading her parents to let her attend makeup school in Paris. “My mother was the type of woman who would wear makeup to the grocery store,” she says. “I found the process mesmerizing. I remember thinking, ‘Wow, my mom can do her eyeliner in a specific way and it doesn’t make her eyes look smaller; it makes them look bigger.’ That’s how I was inspired.”

Growing up in a “very traditional, strict, first-generation Korean household,” Park says pursuing such a passion was a leap of faith. “After I finished school in Paris, I went to Chicago and worked at a MAC Cosmetics counter. That’s where I learned the most,” she says. “To do makeup on somebody who has, for example, cystic acne or hyperpigmentation... these are not things we got to learn in school.” Eventually, she thought, “This is my calling.”

A move to New York in 2010 led her to work with legendary artists like Peter Philips and Diane Kendal. And today she counts Kravitz and Brie Larson as collaborators. Her trademark? Sensual, tonal looks that stand out in all their subtlety. “I’m not the artist who’s going to do bright green eye shadow or completely change your face,” she says. “I’m very lucky with the girls I work with because they respect and love that too.” —ANGELIQUE SERRANO

GET HER SIGNATURE LOOK



STEP 1
“I tried the mask on myself—because I try everything on myself—and I saw such a difference,” Park says. “It’s like immediate radiance.”
Lancer Lift & Plump Sheet Mask, \$120/4; lancerskincare.com.



STEP 2
Park is never without this plumping serum in her kit. “It’s a very lightweight one,” she says. “I use it for an instant lift.”
Kiehl’s Hydro-Plumping Re-Texturizing Serum Concentrate, \$59/1.7 fl. oz.; kiehls.com.



STEP 3
She’s a big fan of makeup artist Troy Surratt’s retractable brow pencils and Chanel’s sheer lipsticks. Of the latter, Park says, “the texture just melts. The formula gives shine, feels moisturizing, and has a nice tint.”
Surratt Expressioniste Brow Pencil, \$40; surrattbeauty.com. Chanel Rouge Coco Flash, \$38; chanel.com.